



# ONYX 12.2: Simple. Innovative. Proven.

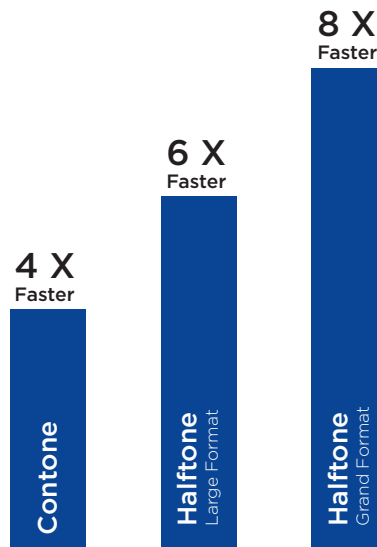
ONYX 12.2 software builds upon accelerated speed and performance, a simplified user interface, enhanced automation and advanced finishing tools to do more in less time.

# 64 64-bit Platform: Speed Plus Performance

The power of a next-generation, all 64-bit platform

NEW

- *Optimized color calculations for increased RIP and data transfer processing speeds.*
- *Increased productivity directly improves the bottom line by processing more files in less time with record benchmark RIP speeds.*
- *Save hours on large file data transfer speeds to enable more print jobs per day.*
- *Maximize your hardware investment with a fully integrated 64-bit platform to setup jobs, move files and open applications quickly.*
- *Boost overall performance with the latest 64-bit Adobe® PDF Print Engine and JAWS RIP updates.*



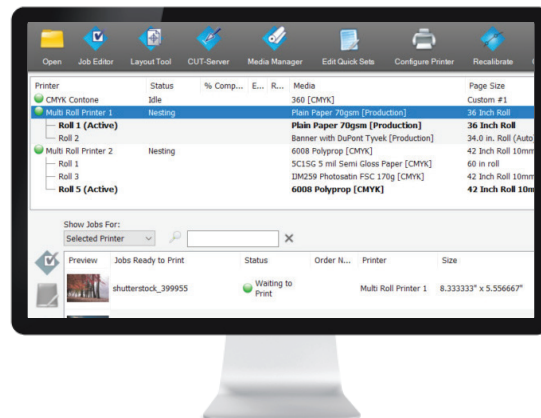
Average speed increase between ONYX 12.2 and ONYX 11.

# Simplified Production: Easy to Use

Save time on every job with new easy to use and learn visual tools

NEW

- *Multi-roll functionality to print more in less time with an intuitive user interface, switching rolls automatically to print jobs in the queue.*
- *Simple, integrated G7 process improves gray color for output consistency across multiple devices and applications.*
- *Avoid wasted sheet media and increase production efficiency with an intuitive user interface and visual nesting previews.*
- *Identify jobs and navigate quickly with a new color-managed visual RIP-Queue that introduces thumbnail previews and displays edits on the fly.*
- *Simultaneously view printer information, nesting previews, and job details in a single application window with a clean look and feel.*



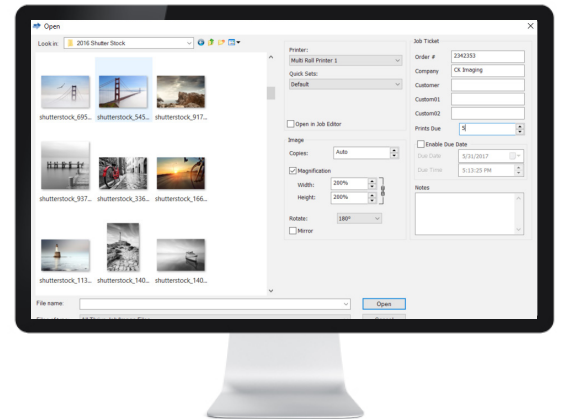


# Application Tools: Do More Faster

Automate finishing functions and create new revenue opportunities

NEW

- Reduce time on production with job scaling and rotation from the file-open dialog before sending jobs to the RIP-Queue.
- Enhanced tiling and automatic cut path generation with onscreen previews simplifies job set up and production.
- Create prints with a versatile grommet mark tool and preview cut paths around tile boundaries to significantly reduce time in the final stages of production.
- Bleed tool allows you to produce a variety of new applications and improve existing workflows, without the need to redesign the original artwork.
- Have confidence applying white and specialty inks to any file type using the redesigned Spot Layer Tool.

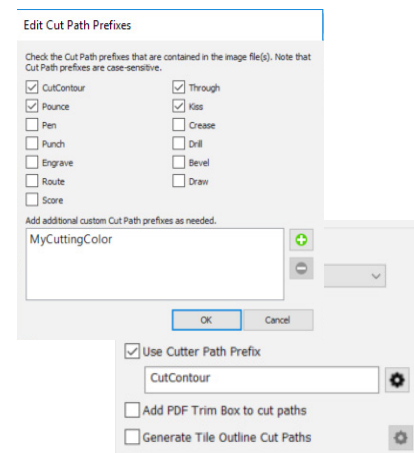


# Quick Sets 2.0: Automate Production

Job templates that streamline and automate routine tasks

NEW

- Enhanced cut workflow with multiple cutting path prefixes and cutter device settings improving automation with print and cut workflows.
- Easily automate job preparation and finishing tools to reduce manual entry, mistakes, and wasted media.
- Build automated workflows around custom production needs and design preferences based on media, bleed, trim, art, or crop boxes.
- Quick Sets 2.0 provides a new user experience with the addition of application tools and a simplified interface.
- Change Quick Sets for an existing job without the need to re-open it and share Quick Sets between printers, ensuring consistency throughout the production floor.



# Software Maintenance

Keep your software current to secure your investment

ONYX Advantage software maintenance provides a cost effective way to keep your RIP and workflow software current and gives you all of the latest features in ONYX 12.2. You can gain immediate access to ONYX software upgrades, versions and releases as well as availability to the hundreds of new and existing printer drivers. As an added benefit, ONYX Advantage contract holders have access to an expansive library of on-demand videos covering product training and application support.

**Upgrade your system to ONYX 12.2 by purchasing an ONYX Advantage software maintenance contract. Visit [onyxgfx.com](http://onyxgfx.com) or contact your authorized ONYX Reseller to get started today.**



NEW FEATURES & ENHANCEMENTS	MINIMUM SYSTEM REQUIREMENTS
-----------------------------	-----------------------------

- Multi-roll functionality with intuitive user interface
- Simplified page size and media handling
- Scaling and job rotation from the file-open dialog
- Multiple cut path prefixes automatically recognized & device updates
- Bi-directional printer data as part of the RIP-Queue interface
- Full 64-bit Platform (applications & RIP engines)
- Redesigned RIP-Queue user interface
  - Thumbnail views for individual jobs in the queue
  - Simultaneous nest and job views
  - Full sheet nesting view for flat bed devices
- Finishing Tools: Bleed, Grommets, and Print Marks
- Redesigned Spot Layer Tool for white and specialty inks
- New Quick Set and Job Properties user interface
- Export job setting from Job Editor as a Quick Set
- Apply Quick Set job setting to an existing job in Job Editor and RIP-Queue
- Choke and placement setting for outline cut paths
- Integrated G7 correction and verification
- Lightning fast jpg file rotation
- Custom page sizes
- ONYX Color enhancements for darker blacks and vibrant colors in textile applications
- Enhanced proofing workflow
- Due date and time metadata
- Automated selection of PDF media boxes

\* Availability depends on configuration

<b>Operation System</b>	Microsoft® Windows® 7 Professional 64-bit or newer (32-bit not supported)
<b>Processor</b>	Multi-core processor
<b>RAM</b>	8 GB minimum (4 GB / core recommended)
<b>Hard Drive</b>	500 GB (7200 rpm) (250 GB+ free space)
<b>Monitor</b>	1280 x 1024